

2007 saw the release of DCMF Competition No. 6 for the provision of two new build PFI prison projects at Belmarsh in south east London and Maghull, within Sefton Metropolitan Borough Council, in the north east near Liverpool.

Nick Hyams, with his team at Brennan Williams Lester qualified through the process of Competitive Interview to offer full architectural services on both projects and have just completed submission of the Invitation To Participate in Dialogue, Stage 2 documentation; this being the final stage of the competition between the three remaining Consortia.

Maghull is a cat B male training prison designed to accommodate 600 convicted prisoners with an operational capacity of 800 prisoners on a 15.5 hectare site with a particular focus on Offender Management especially the ROM's eight pathways to reduce re-offending.

Vocational training and educational enhancement are part of the prison regime with Healthcare and Learning Skills prominent in the detailed design, with these services being provided by the local PCT and LSC bodies in partnership with the operators.

Planning restrictions were put on the design with regard to the external landscaping with particular emphasis on the 15m height restriction to all buildings, given its location in the green belt.



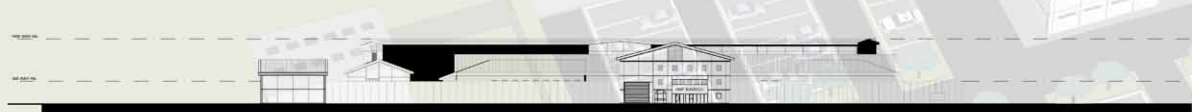
IMPRESSION OF ENTRY BUILDING



VIEW OF VISITS HALL



SOUTH ELEVATION INSIDE PERIMETER



WEST ELEVATION OUTSIDE PERIMETER